

# MONTHLY MEMBERSHIP PROGRESS REPORT

LOCATION INDIA

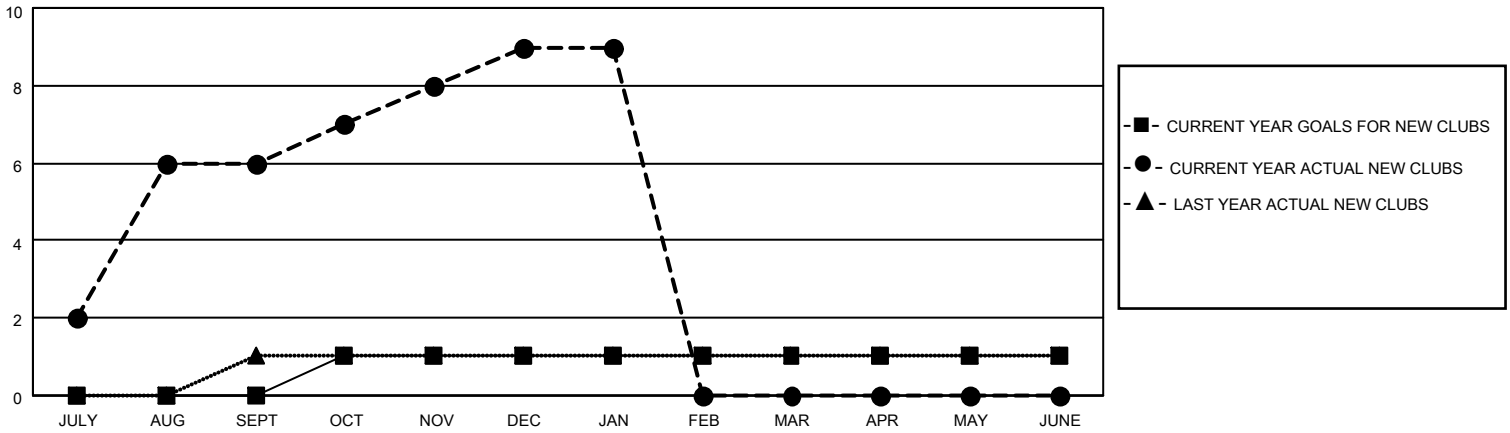
District 3232F2

Results as of: 1/31/2023

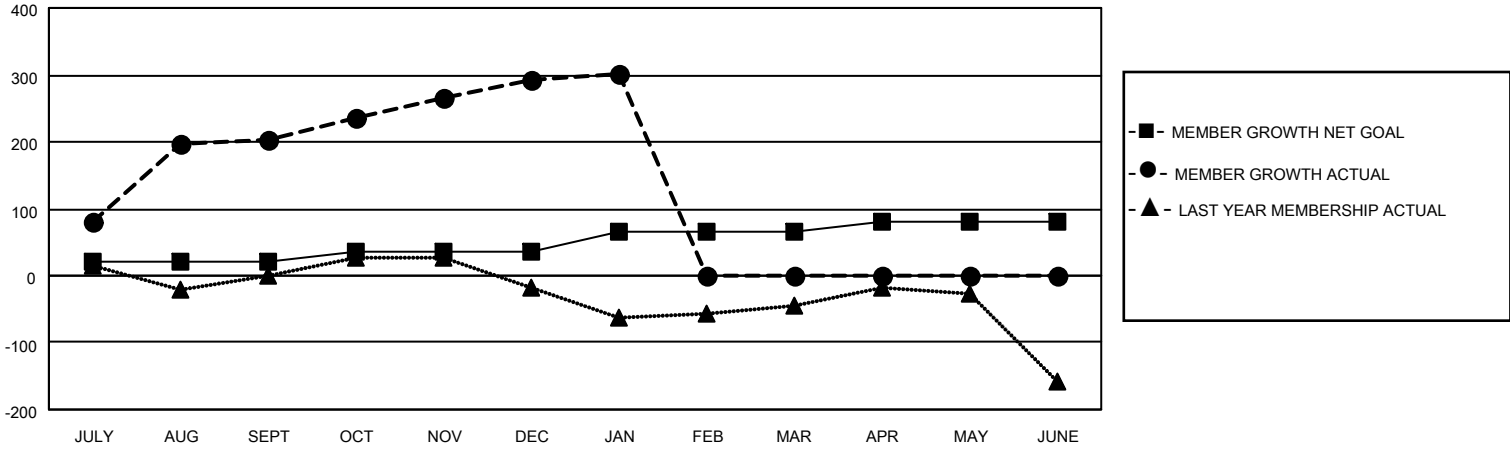
Clubs			
RESULTS FOR 2022-2023			
QUARTER	NEW CLUB GOAL	NEW CLUBS	DROPPED CLUBS
JULY/AUG/SEPT	0	6	0
OCT/NOV/DEC	1	3	0
JAN/FEB/MAR	0	0	0
APR/MAY/JUNE	0	0	0

Members			
RESULTS FOR 2022-2023			
QUARTER	MEMBER GROWTH NET GOAL	MEMBER GROWTH ACTUAL	DROPPED MEMBERS ACTUAL (including transfers)
JULY/AUG/SEPT	20	249	40
OCT/NOV/DEC	15	175	84
JAN/FEB/MAR	30	15	4
APR/MAY/JUNE	15	0	0

**GOALS AND ACTUAL NEW CLUBS CUMULATIVE**



**GOALS AND ACTUAL MEMBERS CUMULATIVE**



**DROPPED CLUBS: 0**

**47 CLUBS OF 84 ADDED 1 OR MORE NEW MEMBERS**

**GENDER DISTRIBUTION**

MALE	1,879 (61.79%)
FEMALE	1,158 (38.08%)
NON BINARY	0 (0.00%)
PREFER NOT TO ANSWER	4 (0.13%)

**DROPPED MEMBERS**

[CLICK HERE FOR CUMULATIVE MEMBERSHIP DATA](#)

DECEASED	5
CLUB CANCELLED	0
OTHER	123
<b>TOTAL</b>	<b>128</b>

TOTAL FAMILY UNIT MEMBERS 2,082

FAMILY MEMBERS PAYING HALF DUES 1,319